

4

3

2

1

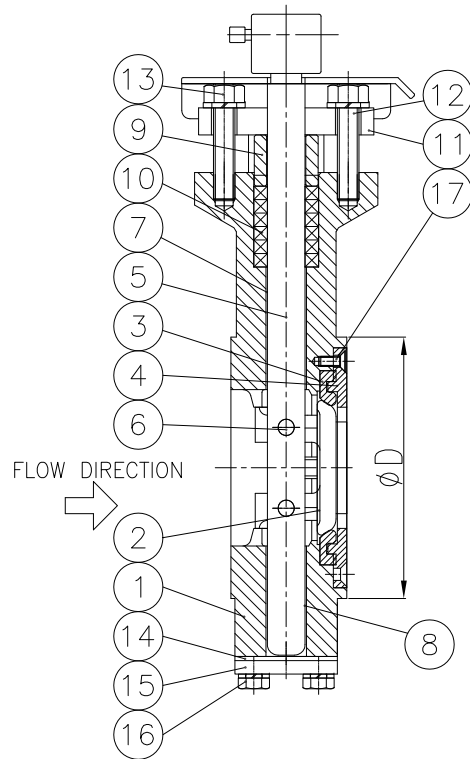
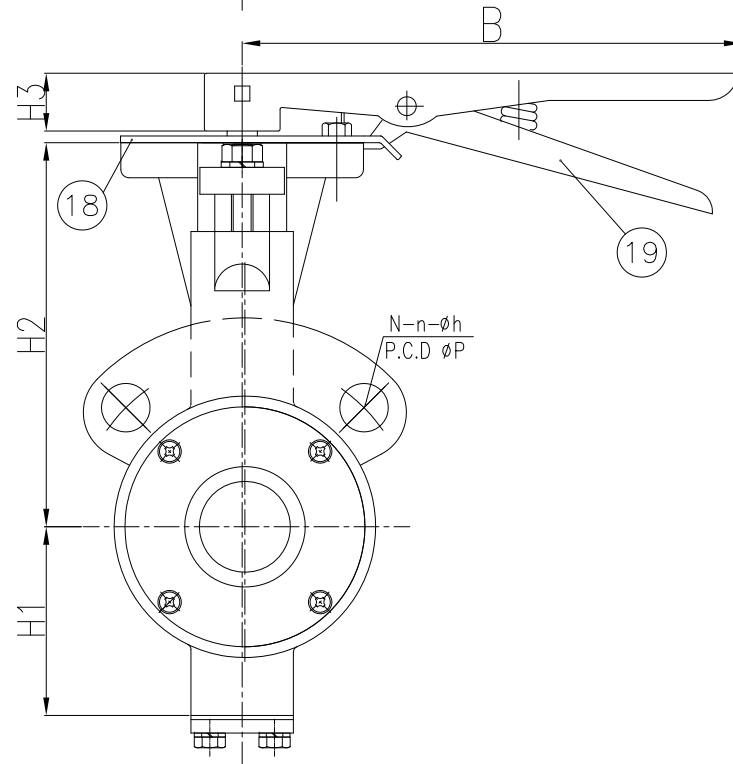
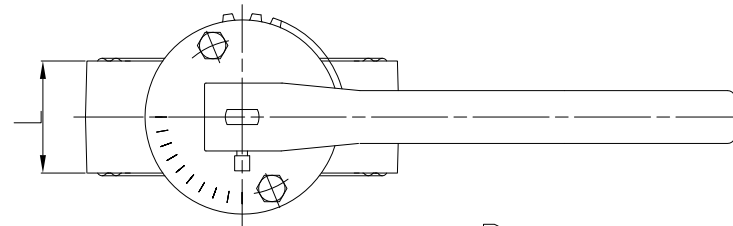
REV.NO	DATE	DESCRIPTION	DRAWN	CHK'D	APP'D.

HIGH PERFORMANCE WAFER TYPE Blv DIMENSIONS							
Unit : mm							
SIZE		L	∅D	H1	H2	H3	B
mm	inch						
50A	2"	43	97	70	142.5	32	207
80A	3"	46	121	82	190	32	207
100A	4"	52	155	93	200.9	32	267
150A	6"	56	205	133	243.9	32	267

FLANGE DRILLING DIMENSIONS					
Unit : mm					
SIZE		Class150			
mm	inch	P.C.D. ∅P	N	n	h
50A	2"	120.7	4	2	∅19
80A	3"	152.4	4	2	∅19
100A	4"	190.5	8	2	∅19
150A	6"	241.3	8	2	∅22



- NOTE
- BASIC DESIGN : EN593
  - FACE TO FACE : EN558
  - FLANGE DRILLING : ASME B 16.5
  - HYDRO. TEST : ISO 5208  
-body : 30 bar  
-seat : 22 bar



19	LEVER	ASS'Y	1	—
18	INDICATOR	SS 400	1	GALVANIZED
17	Wrench Bolt	SUS 304	4	—
16	Hex Bolt/SW	SUS 304	4	—
15	End Cover	SUS 304	1	—
14	Gasket	PTFE	1	—
13	Hex Nut	SUS 304	2	—
12	Stud Bolt/SW	SUS 304	2	—
11	Gland Flange	SUS 304	1	—
10	Packing	PTFE	5	—
9	Gland Ring	SUS 304	1	—
8	Lower bush	304+PTFE	1	—
7	Upper Bush	304+PTFE	1	—
6	Taper Pin	SUS 304	2	—
5	Stem	SUS 304	1	—
4	Retainer	SUS 304	1	—
3	Seat	PTFE	1	—
2	Disc	A351 CF8	1	—
1	Body	A216 WCB	1	—
NO.	PART NAME	MATERIAL	Q'TY	REMARK

TITLE	LEVER OPERATOR					
HIGH PERFORMANCE WAFER TYPE BUTTERFLY VALVES						
DES.	CHK.	APP.	ANGLE	3rd	SCALE	N/S
D.G.KIM	—	B.S.KIM	RATING.	CLASS150	DATE	2019.01.22
			SIZE.	DIM	DWG NO.	HSWL-C150-WDIM

**KB Valve TECHNOLOGY** TEL:055)329-4614 FAX:055)329-4610