

HIGH PERFORMANCE LUG TYPE BIV DIMENSIONS							
Unit : mm							
SIZE		L	øD	H1	H2	H3	B
mm	inch						
50A	2"	43	100	70	142.5	32	207
80A	3"	46	121	79	170	32	207
100A	4"	52	155	110	180	32	267
150A	6"	56	205	140	195	32	267

FLANGE DRILLING DIMENSIONS					
Unit : mm					
SIZE		Class150			
mm	inch	P.C.D. øP	n	h	
50A	2"	120.7	4	5/8	
80A	3"	152.4	4	5/8	
100A	4"	190.5	8	5/8	
150A	6"	241.3	8	3/4	

REV.NO	DATE	DESCRIPTION	DRAWN	CHK'D	APP'D.

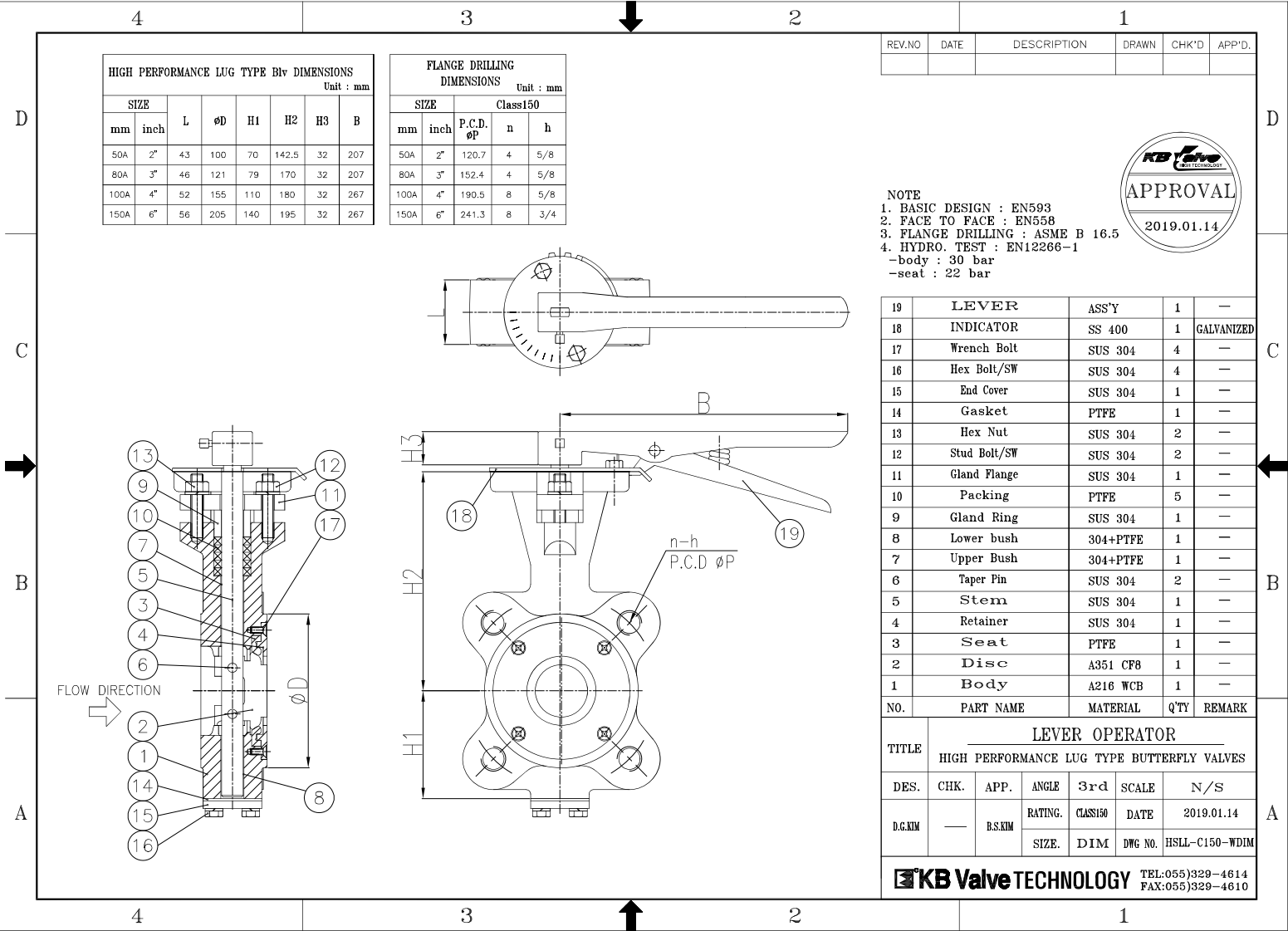


NOTE
 1. BASIC DESIGN : EN593
 2. FACE TO FACE : EN558
 3. FLANGE DRILLING : ASME B 16.5
 4. HYDRO. TEST : EN12266-1
 -body : 30 bar
 -seat : 22 bar

NO.	PART NAME	MATERIAL	QTY	REMARK
19	LEVER	ASS'Y	1	—
18	INDICATOR	SS 400	1	GALVANIZED
17	Wrench Bolt	SUS 304	4	—
16	Hex Bolt/SW	SUS 304	4	—
15	End Cover	SUS 304	1	—
14	Gasket	PTFE	1	—
13	Hex Nut	SUS 304	2	—
12	Stud Bolt/SW	SUS 304	2	—
11	Gland Flange	SUS 304	1	—
10	Packing	PTFE	5	—
9	Gland Ring	SUS 304	1	—
8	Lower bush	304+PTFE	1	—
7	Upper Bush	304+PTFE	1	—
6	Taper Pin	SUS 304	2	—
5	Stem	SUS 304	1	—
4	Retainer	SUS 304	1	—
3	Seat	PTFE	1	—
2	Disc	A351 CF8	1	—
1	Body	A216 WCB	1	—

LEVER OPERATOR						
HIGH PERFORMANCE LUG TYPE BUTTERFLY VALVES						
TITLE	DES.	CHK.	APP.	ANGLE	3rd SCALE	N/S
D.G.NM		B.S.NM		RATING.	CLASS150	DATE
				SIZE.	DIM	DWG NO.
						HSSL-C150-WDIM

KB Valve TECHNOLOGY TEL:055)329-4614 FAX:055)329-4610



HIGH PERFORMANCE LUG TYPE BIV DIMENSIONS								
Unit : mm								
SIZE		L	∅D	H1	H2	H3	B	∅R
mm	inch							
200A	8"	60	266	165	240	85.5	205	250

FLANGE DRILLING DIMENSIONS				
Unit : mm				
SIZE		Class150		
mm	inch	P.C.D. ∅P	n	h
200A	8"	298.5	8	3/4

REV.NO	DATE	DESCRIPTION	DRAWN	CHK'D	APP'D.

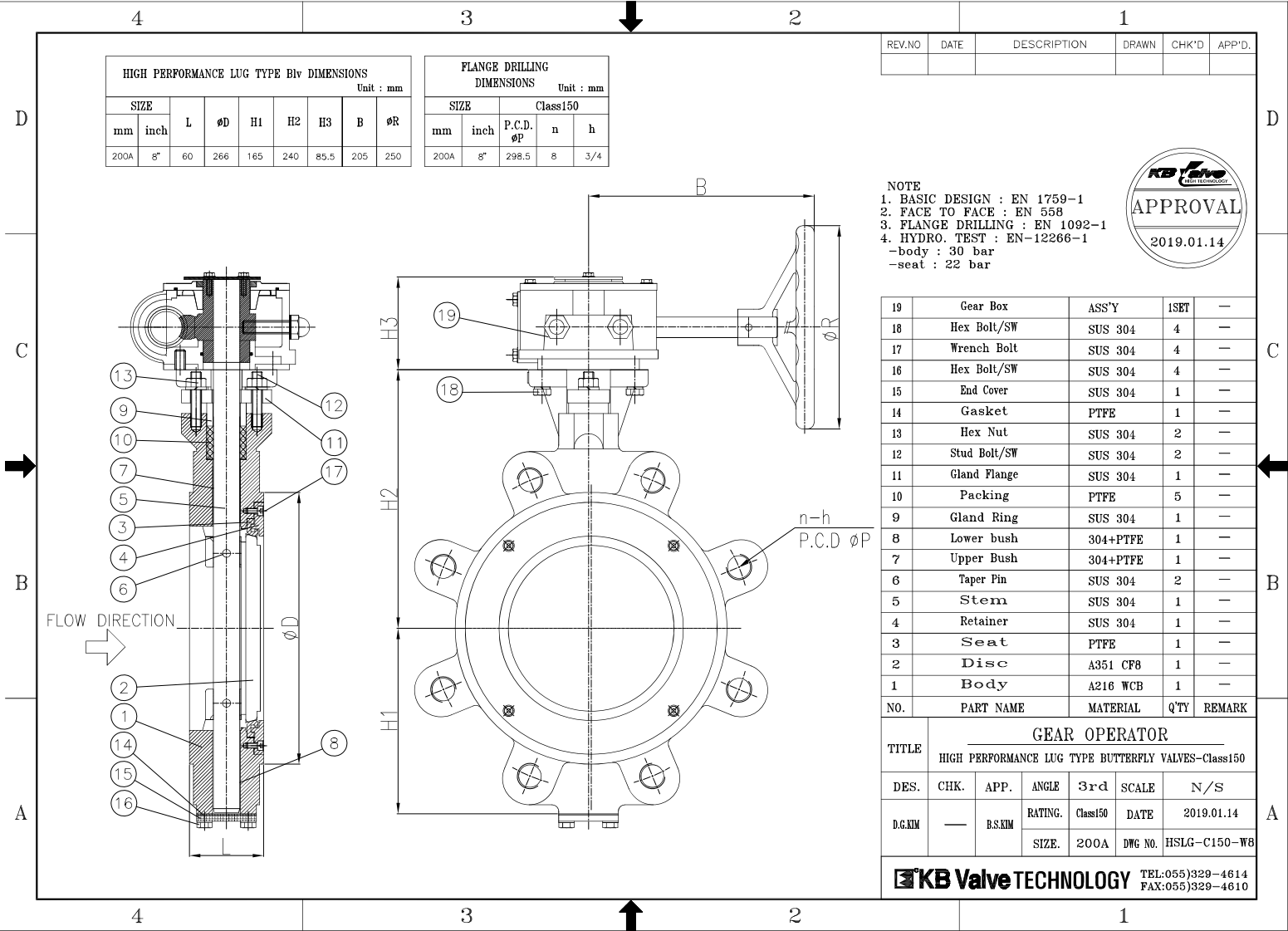


NOTE
 1. BASIC DESIGN : EN 1759-1
 2. FACE TO FACE : EN 558
 3. FLANGE DRILLING : EN 1092-1
 4. HYDRO. TEST : EN-12266-1
 -body : 30 bar
 -seat : 22 bar

19	Gear Box	ASS'Y	1SET	—
18	Hex Bolt/SW	SUS 304	4	—
17	Wrench Bolt	SUS 304	4	—
16	Hex Bolt/SW	SUS 304	4	—
15	End Cover	SUS 304	1	—
14	Gasket	PTFE	1	—
13	Hex Nut	SUS 304	2	—
12	Stud Bolt/SW	SUS 304	2	—
11	Gland Flange	SUS 304	1	—
10	Packing	PTFE	5	—
9	Gland Ring	SUS 304	1	—
8	Lower bush	304+PTFE	1	—
7	Upper Bush	304+PTFE	1	—
6	Taper Pin	SUS 304	2	—
5	Stem	SUS 304	1	—
4	Retainer	SUS 304	1	—
3	Seat	PTFE	1	—
2	Disc	A351 CF8	1	—
1	Body	A216 WCB	1	—
NO.	PART NAME	MATERIAL	QTY	REMARK

GEAR OPERATOR						
HIGH PERFORMANCE LUG TYPE BUTTERFLY VALVES-Class150						
DES.	CHK.	APP.	ANGLE	3rd	SCALE	N/S
D.G.M	—	B.S.M	RATING.	Class150	DATE	2019.01.14
			SIZE.	200A	DWG NO.	HSLG-C150-W8

KB Valve TECHNOLOGY TEL:055)329-4614 FAX:055)329-4610



HIGH PERFORMANCE LUG TYPE BIV DIMENSIONS							
Unit : mm							
SIZE		L	øD	H1	H2	H3	B
mm	inch						
50A	2"	43	100	70	142.5	32	207
80A	3"	46	121	79	170	32	207
100A	4"	52	155	110	180	32	267
150A	6"	56	205	140	195	32	267

FLANGE DRILLING DIMENSIONS					
Unit : mm					
SIZE		Class150			
mm	inch	P.C.D. øP	n	h	
50A	2"	120.7	4	5/8	
80A	3"	152.4	4	5/8	
100A	4"	190.5	8	5/8	
150A	6"	241.3	8	3/4	

REV.NO	DATE	DESCRIPTION	DRAWN	CHK'D	APP'D.



NOTE
 1. BASIC DESIGN : EN593
 2. FACE TO FACE : EN558
 3. FLANGE DRILLING : ASME B 16.5
 4. HYDRO. TEST : EN12266-1
 -body : 30 bar
 -seat : 22 bar

NO.	PART NAME	MATERIAL	QTY	REMARK
19	LEVER	ASS'Y	1	—
18	INDICATOR	SS 400	1	GALVANIZED
17	Wrench Bolt	SUS 316	4	—
16	Hex Bolt/SW	SUS 304	4	—
15	End Cover	SUS 304	1	—
14	Gasket	PTFE	1	—
13	Hex Nut	SUS 304	2	—
12	Stud Bolt/SW	SUS 304	2	—
11	Gland Flange	SUS 304	1	—
10	Packing	PTFE	5	—
9	Gland Ring	SUS 304	1	—
8	Lower bush	304+PTFE	1	—
7	Upper Bush	304+PTFE	1	—
6	Taper Pin	SUS 304	2	—
5	Stem	SUS 304	1	—
4	Retainer	SUS 304	1	—
3	Seat	PTFE	1	—
2	Disc	A351 CF8M	1	—
1	Body	A351 CF8M	1	—

LEVER OPERATOR						
HIGH PERFORMANCE LUG TYPE BUTTERFLY VALVES						
DES.	CHK.	APP.	ANGLE	3rd	SCALE	N/S
D.G.NIM	—	B.S.NIM	RATING.	CLASS150	DATE	2019.01.14
			SIZE.	DIM	DWG NO.	HSSL-C150-FDIM

KB Valve TECHNOLOGY TEL:055)329-4614 FAX:055)329-4610

D
C
B
A

D
C
B
A

4

3

2

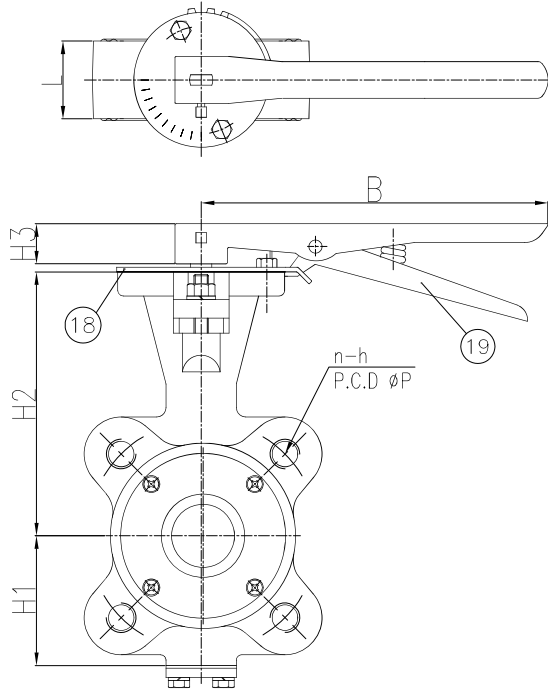
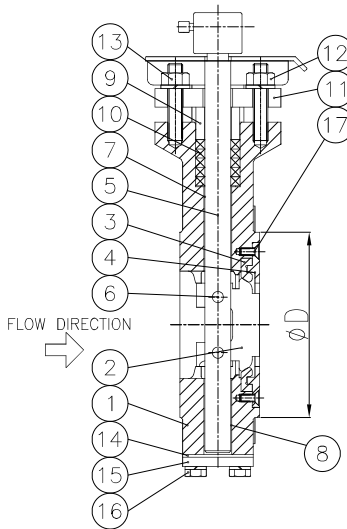
1

4

3

2

1



HIGH PERFORMANCE LUG TYPE BIV DIMENSIONS								
Unit : mm								
SIZE		L	∅D	H1	H2	H3	B	∅R
mm	inch							
200A	8"	60	266	165	240	85.5	205	250

FLANGE DRILLING DIMENSIONS				
Unit : mm				
SIZE		Class150		
mm	inch	P.C.D. ∅P	n	h
200A	8"	298.5	8	3/4

REV.NO	DATE	DESCRIPTION	DRAWN	CHK'D	APP'D.



NOTE
 1. BASIC DESIGN : EN 1759-1
 2. FACE TO FACE : EN 558
 3. FLANGE DRILLING : EN 1092-1
 4. HYDRO. TEST : EN-12266-1
 -body : 30 bar
 -seat : 22 bar

19	Gear Box	ASS'Y	1SET	—
18	Hex Bolt/SW	SUS 304	4	—
17	Wrench Bolt	SUS 316	4	—
16	Hex Bolt/SW	SUS 304	4	—
15	End Cover	SUS 304	1	—
14	Gasket	PTFE	1	—
13	Hex Nut	SUS 304	2	—
12	Stud Bolt/SW	SUS 304	2	—
11	Gland Flange	SUS 304	1	—
10	Packing	PTFE	5	—
9	Gland Ring	SUS 304	1	—
8	Lower bush	304+PTFE	1	—
7	Upper Bush	304+PTFE	1	—
6	Taper Pin	SUS 304	2	—
5	Stem	SUS 304	1	—
4	Retainer	SUS 304	1	—
3	Seat	PTFE	1	—
2	Disc	A351 CF8M	1	—
1	Body	A351 CF8M	1	—
NO.	PART NAME	MATERIAL	QTY	REMARK

GEAR OPERATOR						
HIGH PERFORMANCE LUG TYPE BUTTERFLY VALVES-Class150						
DES.	CHK.	APP.	ANGLE	3rd SCALE	N/S	
D.G.M	—	B.S.M	RATING.	Class150	DATE	2019.01.14
			SIZE.	200A	DWG NO.	HSLG-C150-F8

KB Valve TECHNOLOGY TEL:055)329-4614 FAX:055)329-4610

