

FORGED BRASS BALL VALVE

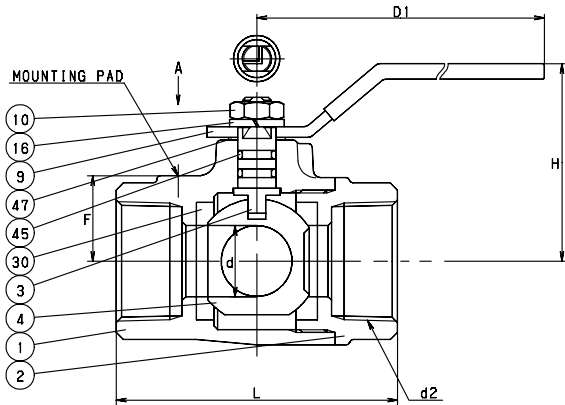
THREE WAY

Two Piece Body with Mounting Pad • Maintenance Free Double O-Ring Stem Seals
L-Port Design • Blowout Proof Stem • Chrome Plated Ball • PTFE Seats

CODE # 54P (AKTNP)

1/2" - 2"

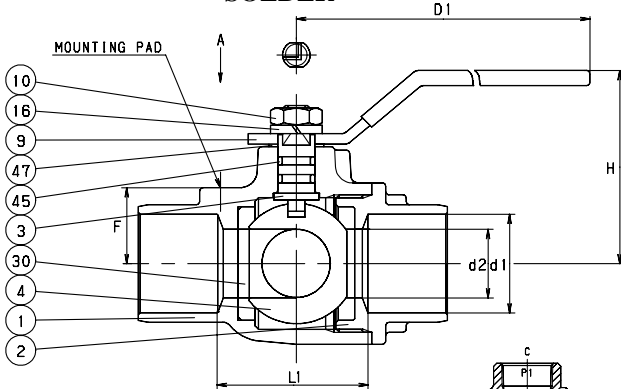
THREADED



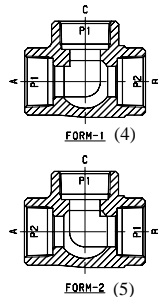
CODE # 55P (CTNP)

1/2" - 1"

SOLDER*



*REFERENCE VALVE INSTALLATION TIPS
FOR SOUND SOLDER JOINTS (PAGE BV-66)
OR SEE INSTALLATION SHEET PACKAGED
WITH VALVE.



SPECIFICATION

Approved valve shall have three way two piece forged brass body, blowout proof stem, PTFE seats, maintenance free double o-ring stem seals, chrome plated ball, and L-port port design. Valves shall be pressure rated to 150 PSI @ 300°F/400 WOG.

KITZ Code No. 54P (AKTNP) Threaded Ends
55P (CTNP) Soldered Ends

STANDARDS

| | |
|-------------------|--------------|
| END TO END | KITZ |
| THREADED ENDS | ANSI B1.20.1 |
| SOLDER JOINT ENDS | ANSI B16.18 |
| WALL THICKNESS | KITZ |

PRESSURE/TEMPERATURE

150PSI @ 300° F
400 PSI NON-SHOCK COLD WATER, OIL OR GAS

NOTE: PRESSURE/TEMPERATURE CHART - PAGE BV-29

MATERIAL LIST

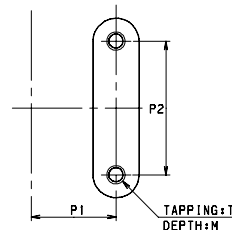
| NO. | NAME OF PART | SPECIFICATION |
|-----|---------------|-----------------------------------|
| 1 | BODY | FORGED BRASS (B283, C37700) |
| 2 | BODY CAP | FORGED BRASS (B283, C37700) |
| 3 | STEM | (1) SPECIAL BRASS (KITZ, K-METAL) |
| 4 | BALL | (2) FORGED BRASS (B283, C37700) |
| 9 | HANDLE | (3) STAINLESS STEEL |
| 10 | HANDLE NUT | CARBON STEEL |
| 16 | WASHER | CARBON STEEL |
| 30 | BALL SEAT | PTFE |
| 45 | O-RINGS | FPM |
| 47 | THRUST WASHER | POM |

- NOTES:
- (1) PROPRIETARY DEZINCIFICATION RESISTANT MATERIAL
 - (2) CR. PLATING
 - (3) WITH PLASTIC COVERING
 - (4) FLOW IS FACILITATED BETWEEN "A" & "C" AFTER EXTENDED USE, PORT "B" MAY LEAK SLIGHTLY TO PORT "A" & "C" IF PRESSURE IN P2 IS HIGHER THAN P1.
 - (5) FLOW IS FACILITATED BETWEEN "C" & "B" AFTER EXTENDED USE, PORT "A" MAY LEAK SLIGHTLY TO PORT "B" & "C", IF PRESSURE IN P2 IS HIGHER THAN P1

DIMENSIONS - WEIGHTS - QUANTITIES

| d2 SIZE | d | H | D1 | L | L1 | P1 | P2 | F | d1 Max. Min. | APPROX. NET WT. | CTN QTY |
|------------|------|------|------|------|------|-----|------|------|-----------------|--------------------|------------|
| 1/2 | .39 | 1.77 | 3.94 | 2.64 | 1.32 | .50 | 1.12 | .59 | .631 .627 | 59 | 60 |
| 3/4 | .59 | 1.89 | 3.94 | 2.68 | 1.34 | .87 | 1.37 | .72 | .881 .877 | 63 | 48 |
| 1 | .79 | 2.17 | 5.12 | 3.11 | 1.56 | .87 | 1.37 | .87 | 1.132 1.128 | 64 | 32 |
| 1 1/4 | .98 | 2.36 | 5.12 | 3.50 | 1.75 | .93 | 1.50 | 1.05 | - - | 67 | 24 |
| 1 1/2 | 1.26 | 2.56 | 5.12 | 3.94 | 1.97 | .93 | 1.50 | 1.22 | - - | 62 | 16 |
| 2 | 1.57 | 2.95 | 5.91 | 4.53 | 2.26 | .93 | 1.50 | 1.77 | - - | 72 | 12 |

MOUNTING PAD



T - 10-24 UNC (1/2"-1")
1/4-24 UNC (1 1/4"-2")
M - .31 (1/2"-2")